

# WARRANTY COVERAGE GUIDE: **Differentials**

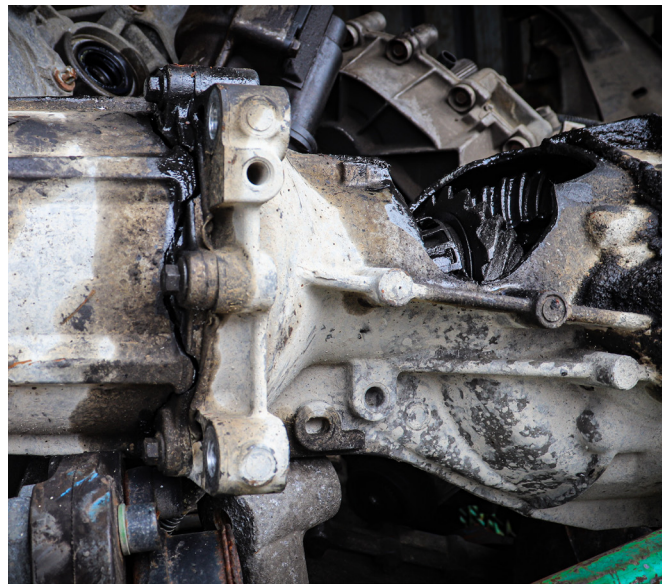
## COVERED UNDER WARRANTY



### Notes

- No signs of excessive or improper use
- Free of damage caused by use or tools
- No cracks, broken, or hanging parts
- Hardware is undamaged, body is clean and free of chips and cracks

## NOT COVERED UNDER WARRANTY



### Notes

- Clear signs of excessive or improper use that may affect performance
- Obvious damage caused by use of excessive force, impact, or tools
- Excessive rust and bent parts
- Stripped and damaged hardware
- Cracked body and large piece broken off
- Damaged body revealing parts inside